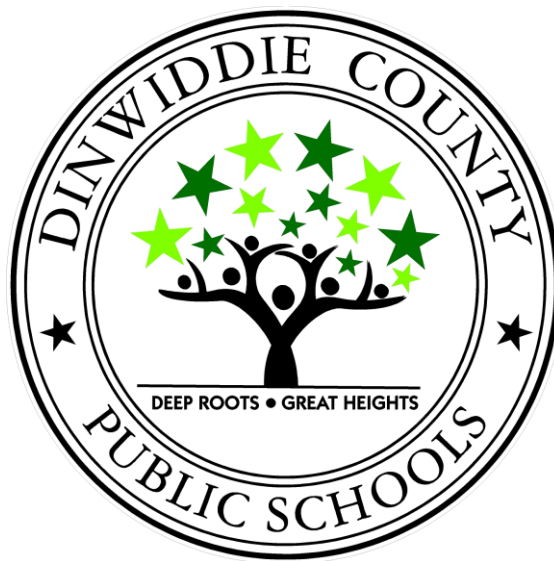


Return to Learn: Phased Reopening Plan

Middle and High School



Dinwiddie County Public Schools

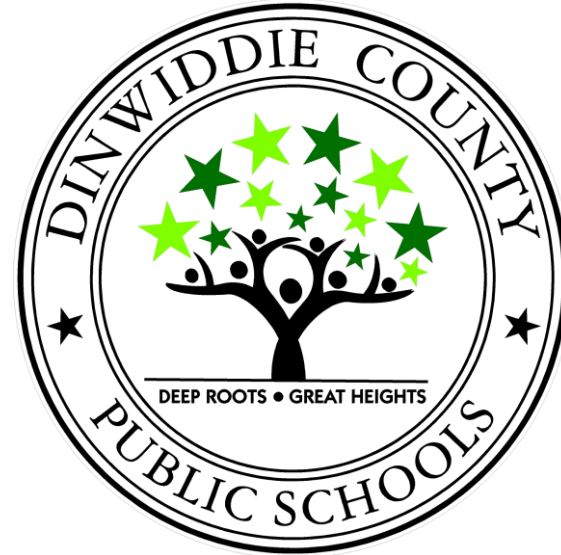
Science + Community

“Returning to school is important for the healthy development and well-being of children, but we must pursue re-opening in a way that is safe for all students, teachers and staff. **Science should drive decision-making on safely reopening schools. Public health agencies must make recommendations based on evidence, not politics.** We should leave it to health experts to tell us when the time is best to open up school buildings, and listen to educators and administrators to shape how we do it.”

The American Academy of Pediatrics

National Education Association

The School Superintendents Association



INDICATORS	Lowest risk of transmission in schools	Lower risk of transmission in schools	Moderate risk of transmission in schools	Higher risk of transmission in schools	Highest risk of transmission in schools
CORE INDICATORS					
Number of new cases per 100,000 persons within the last 14 days*	<5	5 to <20	20 to <50	50 to ≤ 200	>200
Percentage of RT-PCR tests that are positive during the last 14 days**	<3%	3% to <5%	5% to <8%	8% to ≤ 10%	>10%
<p>Ability of the school to implement 5 key mitigation strategies:</p> <ul style="list-style-type: none"> • Consistent and correct use of masks • Social distancing to the largest extent possible • Hand hygiene and respiratory etiquette • Cleaning and disinfection • Contact tracing in collaboration with local health department <p>Schools should adopt the additional mitigation measures outlined below to the extent possible, practical and feasible.</p>	Implemented all 5 strategies correctly and consistently	Implemented all 5 strategies correctly but inconsistently	Implemented 3-4 strategies correctly and consistently	Implemented 1-2 strategies correctly and consistently	Implemented no strategies

Crater Positivity Rate - Fluctuating

Crater
Testing Encounters Total

41,358

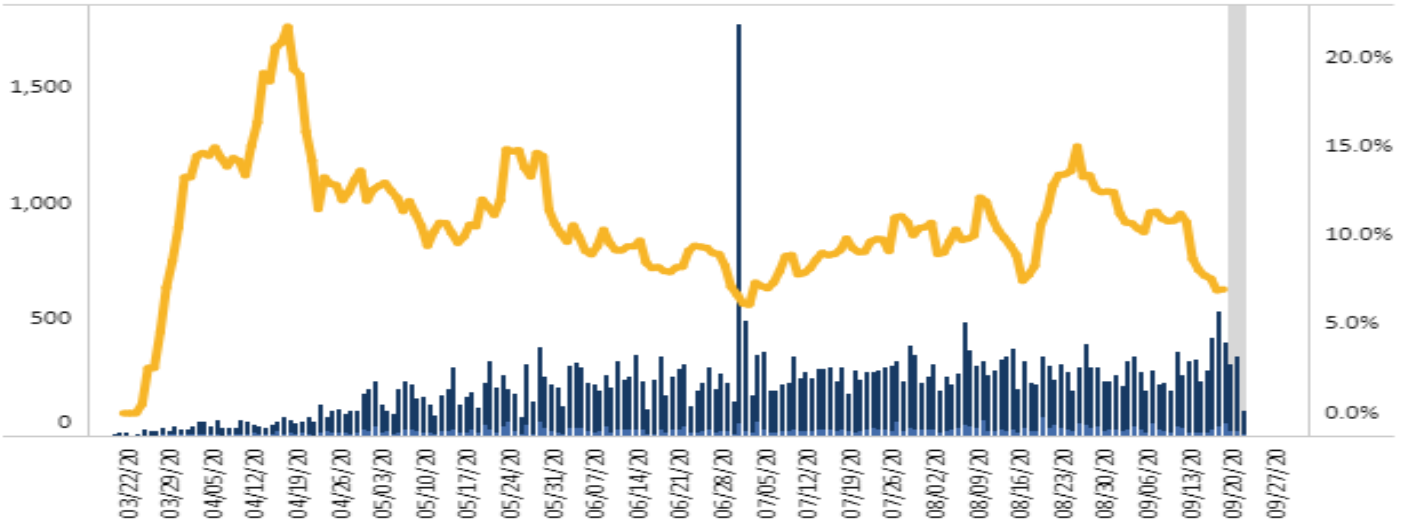
Crater
Current 7-Day Positivity Rate Total

7.0%

Testing Encounters by Health District, Total

Fairfax	261,442
Prince William	126,245
Virginia Beach	105,710
Henrico	102,658
Chesterfield	92,496
Loudoun	91,536
Peninsula	75,184
Roanoke	68,959
Norfolk	64,323
Rappahannock	65,683
Thomas Jefferson	66,650
Richmond	61,093
Chesapeake	58,667
Arlington	61,901
Lord Fairfax	55,037
Central Virginia	55,524
Central Shenandoah	53,366
Western Tidewater	42,753
Crater	41,358
New River	44,364

Number of Testing Encounters, Number of Positive Testing Encounters, and Percent Positivity** by Lab Report Date - Crater, Total



Number of Testing Encounters by Lab Report Date - Crater, Total

■ Number of Testing Encounters
■ 7-Day Moving Average

Dinwiddie Positivity Rate - Fluctuating

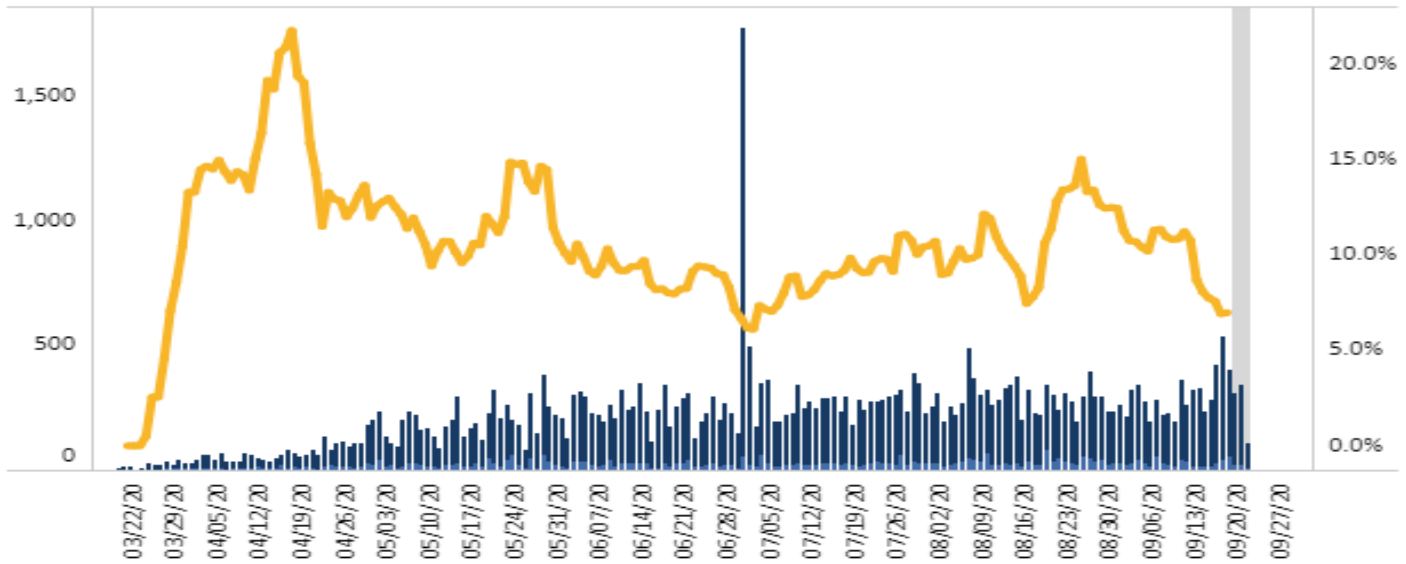
Crater
Testing Encounters Total
41,358

Dinwiddie Positivity Rate - Fluctuating
4.4%  8.0%

Testing Encounters by Health District, Total

Fairfax	261,442
Prince William	126,245
Virginia Beach	105,710
Henrico	102,658
Chesterfield	92,496
Loudoun	91,536
Peninsula	75,184
Roanoke	68,959
Norfolk	64,323
Rappahannock	65,683
Thomas Jefferson	66,650
Richmond	61,093
Chesapeake	58,667
Arlington	61,901
Lord Fairfax	55,037
Central Virginia	55,524
Central Shenandoah	53,366
Western Tidewater	42,753
Crater	41,358

Number of Testing Encounters, Number of Positive Testing Encounters, and Percent Positivity** by Lab Report Date - Crater, Total



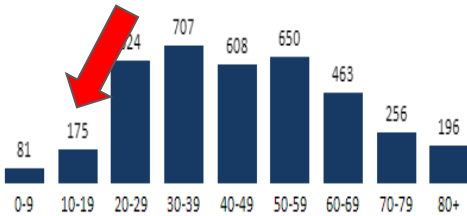
Number of Testing Encounters by Lab Report Date - Crater, Total

■ Number of Testing Encounters
■ 7-Day Moving Average

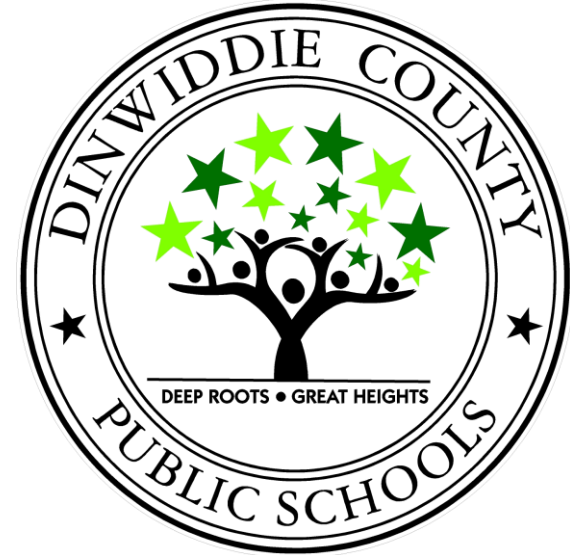
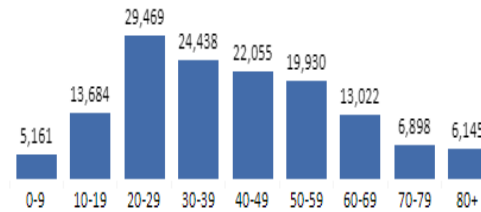
Crater: Demographics

Crater Cases*		Crater Hospitalizations**		Crater Deaths	
3,793		273		102	
Confirmed†	Probable†	Confirmed†	Probable†	Confirmed†	Probable†
3,721	72	272	1	96	6

Cases by Age Group - Crater



Cases by Age Group - Virginia



**Controlled, Substantial
Community Transmission**



INDICATORS	Lowest risk of transmission in schools	Lower risk of transmission in schools	Moderate risk of transmission in schools	Higher risk of transmission in schools	Highest risk of transmission in schools
CORE INDICATORS					
Number of new cases per 100,000 persons within the last 14 days*	<5	★ 5 to <20	20 to <50	50 to ≤ 200	>200
Percentage of RT-PCR tests that are positive during the last 14 days**	<3%	3% to <5%	5% to <8% ★	8% to ≤ 10%	>10%
<p>Ability of the school to implement 5 key mitigation strategies:</p> <ul style="list-style-type: none"> • Consistent and correct use of masks • Social distancing to the largest extent possible • Hand hygiene and respiratory etiquette • Cleaning and disinfection • Contact tracing in collaboration with local health department <p>Schools should adopt the additional mitigation measures outlined below to the extent possible, practical and feasible.</p>	Implemented all 5 strategies correctly and consistently	★ Implemented all 5 strategies correctly but inconsistently	Implemented 3-4 strategies correctly and consistently	Implemented 1-2 strategies correctly and consistently	Implemented no strategies

Masks required

Social Distancing to the extent possible

Hand hygiene and respiratory etiquette

Cleaning and disinfection

Contact Tracing

Co-horting

Adequate supplies

Staggered scheduling

No shared objects

Limit outside visitors

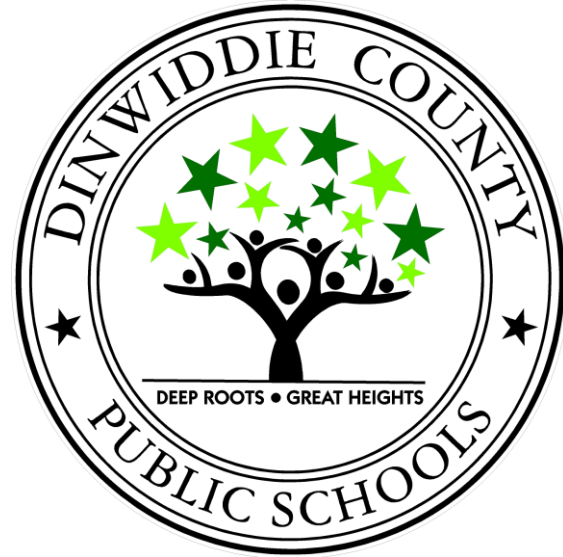
Ventilation

Water systems

Physical barriers and guides

Communal spaces

Food service



Mitigation Strategies to Reduce Transmission in Schools



Middle & High School Timeline

October 5

Grades 6 and 9

October 12

Grades 7 and 10

October 19

Grades 8, 11, and 12

HYBRID

Mondays/Thursdays or Tuesdays/Fridays

(2 days per week as previously scheduled)

Virtual will remain an option at this time.

Phased Reopening

This would be for students who selected the blended learning option on the July 10 survey. For families who wish to change their choice, they should contact the school who will determine space availability. In instances where space is not immediately available, students will be placed on a waiting list and served on a first come, first served basis.

***October 5 - 19**

Grades 6-12

*** As long as Health Data continues to support reopening is safe.**

Upcoming Board Meetings:

October 13

October 27

Phased Reopening

Pertinent Information



*Hours

Elementary 9:00 am - 3:00 pm

Middle 7:30 am – 1:30 pm

High 7:40 am – 1:45 pm

***This is subject to change as more students return to school and/or transportation routes deem necessary.**

Transportation

Families are encouraged to provide transportation.

Members of the same household will sit together; students will be assigned 2 to a seat.

Health Plan



Return to Learn Plan

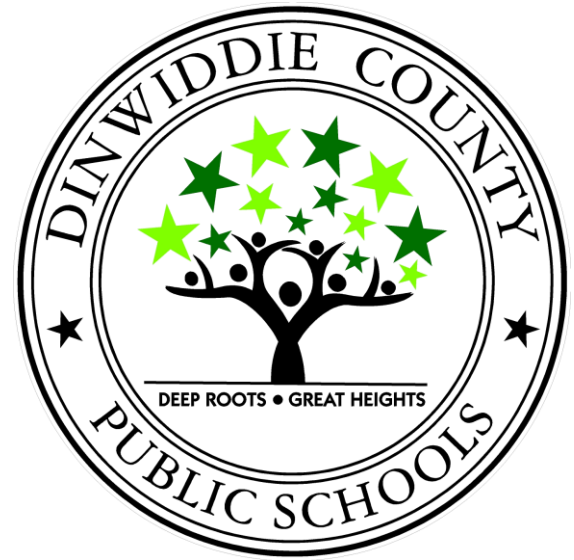


Return to Learn

Schools are an important part of the infrastructure of our communities, as they provide safe, supportive learning environments for students, employ teachers and other staff, and enable parents, guardians, and caregivers to work. Schools also provide critical services that help meet the needs of children and families, especially those who are disadvantaged, through supporting the development of social and emotional skills, creating a safe environment for learning, identifying and addressing neglect and abuse, fulfilling nutritional needs, and facilitating physical activity. School closure disrupts the delivery of in-person instruction and critical services to children and families, which has negative individual and societal ramifications.

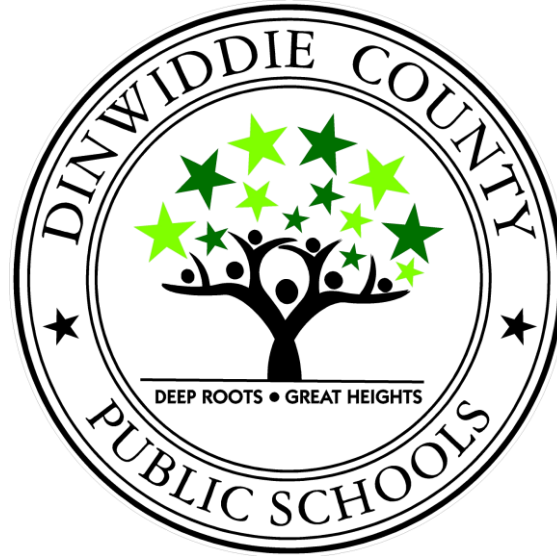
Reopening schools creates opportunity to invest in the education, well-being, and future of one of America's greatest assets—our children—while taking every precaution to protect students, teachers, staff and all their families.

Centers for Disease
Control and Prevention



Return to Learn: Phased Reopening Plan

Middle and High School



Dinwiddie County Public Schools